

Combination

PALMCUFF E DOUBLERING





MYTHOS TREASURES

Single PalmCuff

A single PalmCuff worn individually. It can be worn alone or paired with one or more rings.

YELLOW SHADE:

Solid Yellow Gold PalmCuff

PalmCuff in Yellow Gold with Yellow Precious Stones

A great combo: smooth yellow gold and white gold with diamonds.



MYTHOS TREASURES

Double PalmCuff

Two PalmCuffs worn together. They can be worn alone to enhance the jewelry's presence or paired with one or more rings.

ROSE SHADE:

Solid Rose Gold PalmCuff
PalmCuff in Rose Gold with Rose Precious Stones

A great combo: smooth rose gold and white gold with diamonds.

MYTHOS TREASURES

Multi PalmCuff

Multiple PalmCuffs worn together. There are no limits to the combinations of PalmCuffs and rings.



ROSE SHADE:

Solid Rose Gold PalmCuff

PalmCuff in Rose Gold with Rose Precious Stones

PalmCuff in White Gold with Diamonds



MYTHOS TREASURES

Solo PalmCuff

The best combination for wearing only a PalmCuff is pairing the diamond version with white, yellow or rose gold.

ROSE SHADE:

Solid Rose Gold PalmCuff
PalmCuff in White Gold with Diamonds



MYTHOS TREASURES

Solo DoubleRing

The best way to wear only DoubleRings is by creating a trio: stacking all three gold tones or doubling up on diamonds.

ROSE SHADE:

Solid Rose Gold DoubleRing
DoubleRing in White Gold with Diamonds

Special Edition

PALMCUFF E DOUBLERING





MYTHOS TREASURES

Special Edition

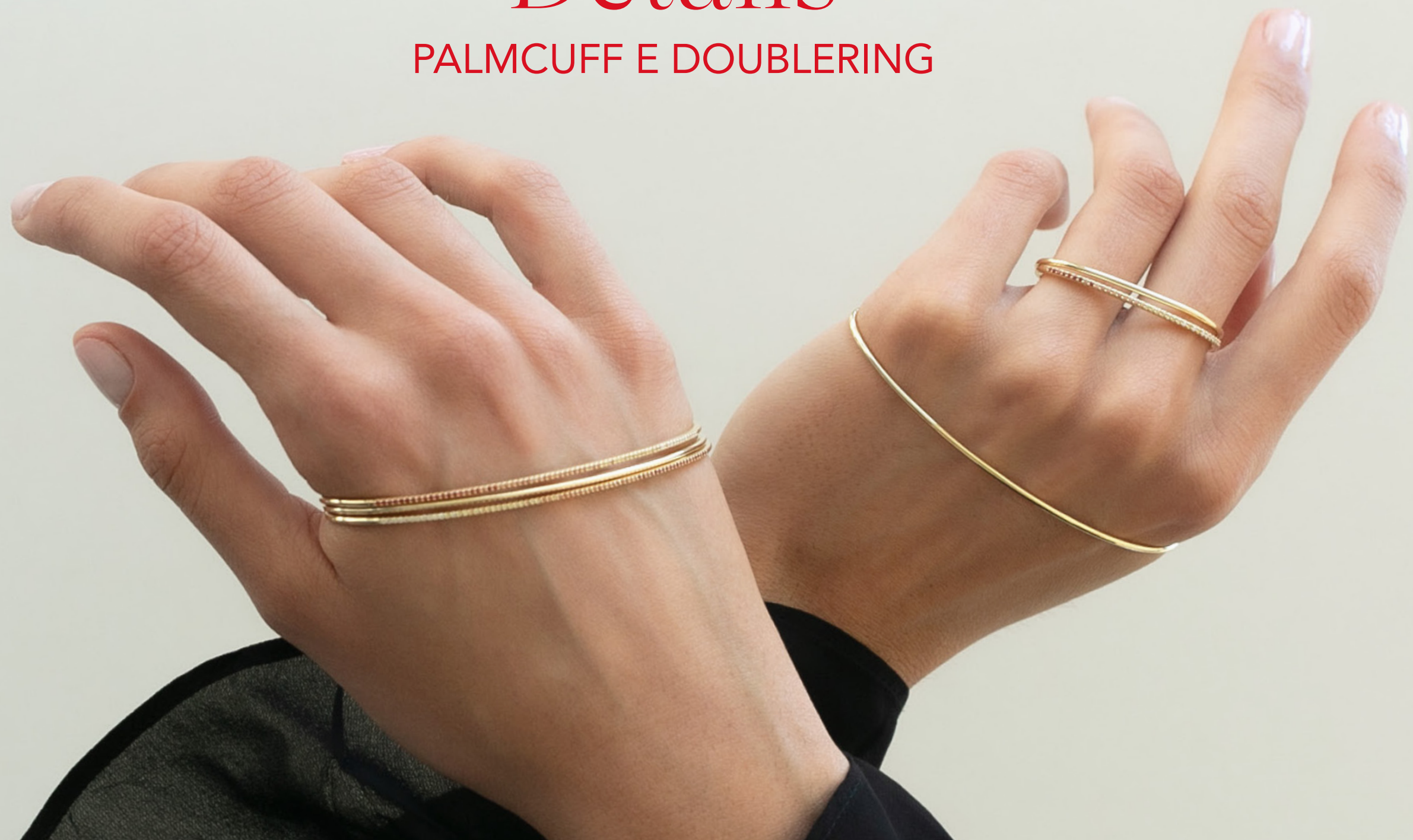
Limited editions released throughout the year, exploring new combinations of gemstones and gold tones. Each piece is a unique expression of light and color, creating ever-changing shades.

So far, the collection has introduced two variations: Sunrise, in rose gold with precious stones in soft pink hues, featuring white diamonds, pink sapphires, and rubies, and Tramonto, in yellow gold, capturing the warm tones of the setting sun with yellow sapphires.

New combinations will be introduced soon, bringing fresh and unexpected color palettes to life.

Details

PALMCUFF E DOUBLERING





PALMCUFF

Yellow Gold



PRODUCT DETAILS:

5.30 Gr average total weight



PALMCUFF

Rose Gold



PRODUCT DETAILS:

5.30 Gr average total weight



PALMCUFF

White Gold with Diamonds



PRODUCT DETAILS:

38 Ct White Diamonds, 69 Stones
6.25 Gr average total weight



PALMCUFF

Yellow Gold with Diamonds and Sapphires



PRODUCT DETAILS:

38 Ct Diamonds and Yellow & Orange Sapphires, 69 Stones
6.25 Gr average total weight



PALMCUFF

Rose Gold with Diamonds and Sapphires



PRODUCT DETAILS:

38 Ct Diamonds, Pink Sapphires & Ruby, 69 Stones
6.25 Gr average total weight



DOUBLERING

Yellow Gold



PRODUCT DETAILS:

2.12 Gr average total weight



DOUBLERING

Rose Gold



PRODUCT DETAILS:

2.12 Gr average total weight



DOUBLERING

White Gold with Diamonds



PRODUCT DETAILS:

19 Ct White Diamonds, 35 Stones
3.01 Gr average total weight



DOUBLERING

Yellow Gold with Diamonds and Sapphires



PRODUCT DETAILS:

19 Ct Diamonds and Yellow & Orange Sapphires, 35 Stones
3.01 Gr average total weight



DOUBLERING

Rose Gold with Diamonds and Sapphires



PRODUCT DETAILS:

19 Ct Diamonds, Pink Sapphires & Ruby, 35 Stones
3.01 Gr average total weight



Size

PALMCUFF E DOUBLERING



MYTHOS TREASURES

PalmCuff

Designed for a perfect fit, the bracelet follows the natural shape of the hand, with a rounded curve on the inner side and a tapered profile on the outer.

Sizing is based on the palm's circumference, with size 19 (19 cm inner diameter) being the most common in Europe. Available in standard sizes 18, 19, and 20, it can also be made in half sizes (18.5, 19.5, 20.5) or custom sizes ranging from 17 to 23.



Size 18



Size 19



Size 20



MYTHOS TREASURES

DoubleRing

The Double Ring Olympia is designed for the ring and middle fingers, with a wider section for the middle finger and a smaller one for the ring finger. Sizes are based on the ring finger measurement.

Developed up to size 63, the most commonly used sizes in Europe range from 49 to 55. The ideal fit allows natural movement while ensuring the ring stays securely in place.



Size 49



Size 51



Size 53



Size 55

Quantity

PALMCUFF E DOUBLERING



MYTHOS TREASURES

Mix & Match Guide

The most popular combinations:

White Gold with Diamonds & Rose Gold

White Gold with Diamonds & Yellow Gold



Rose Gold with Diamonds and Ruby & Rose Gold



Yellow Gold with Diamonds and Sapphires & Yellow Gold

Yellow Gold & White Gold with Diamonds & Rose Gold



Rose Gold with Diamonds and Ruby & White Gold with Diamonds & Rose Gold



Rose Gold & White Gold with Diamonds & Rose Gold & Rose Gold with Diamonds and Ruby


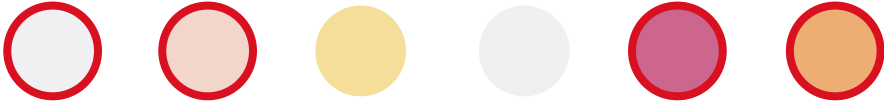


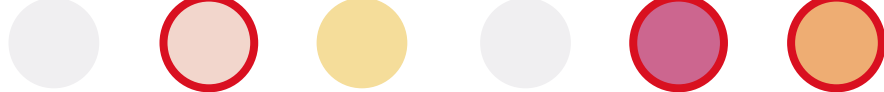




Yellow Gold with Diamonds and Sapphires & Yellow Gold & White Gold with Diamonds & Yellow Gold

Quantity Guide

The **minimum recommended** quantity for a complete PalmCuff and DoubleRing selection should cover all sizes and finishes: **white gold, rose, and yellow**, plus **white gold with diamonds, rose with rubies, and yellow with sapphires**, or a custom alternative.

The highlighted variations, marked with a red border, are the **best sellers**, ensuring the most popular combinations.

	Size 49 - DoubleRing
	Size 51 - DoubleRing
	Size 53 - DoubleRing
	Size 55 - DoubleRing
	Size 18 - PalmCuff
	Size 19 - PalmCuff
	Size 20 - PalmCuff

Quantity Guide

PalmCuff and **DoubleRing** by Aldina are designed to be **worn together**, offering endless combination possibilities. Layering becomes a game of balance, reflecting the style and personality of the wearer.

Best Sellers

- DoubleRing in White gold with Diamonds – the most requested in all sizes
- PalmCuff in White gold with Diamonds – refined and versatile (size 19 is the most popular in Europe)
- Smooth PalmCuff in yellow gold – perfect for creating contrast

Most Loved Combinations

- Yellow gold PalmCuff & Yellow and White gold DoubleRing with diamonds – the perfect contrast
- White gold PalmCuff with diamonds & Rose and White gold DoubleRing with diamonds – a sophisticated mix
- DoubleRing in all three gold tones – striking and luxurious

Recommended Selection

- 18 PalmCuffs (One per size per color, best sellers doubled)
- 24 DoubleRings (One per size per color, best sellers doubled)
- 16 Limited editions for an exclusive touch (best sellers size doubled)

To ensure maximum versatility, **we recommend at least one piece per size and color**. A well-balanced assortment enhances the concept of layering, offering customers endless possibilities for personalization.

Each Aldina jewel has the size **engraved inside** for easy identification.

In addition to the **gold hallmarks** certifying its purity, each jewel has a **unique serial number** engraved. It comes with **dedicated packaging** and a **warranty card** to be completed at the time of purchase, ensuring full traceability.

A close-up photograph of a gold ring with a smooth, polished finish, resting on a surface of fine, golden-brown powder or sand. The powder has a cracked, organic texture, creating a sense of depth and contrast with the smooth metal of the ring. The lighting is warm and directional, highlighting the textures of both the ring and the powder.

Different elements unite in Aldina's jewels, balancing
contrasts with harmony.

ALDINAMILANO.IT

